

REPRODUCTION

SINGLE LINE SKIP TEST 2005A

A. PURPOSE:

1. TEST SINGLE LINE SKIP OPERATION FOR ALL CHANNELS
2. TEST THE INTERLOCKING OF THE BRANCH ON 9 OR 12 BY A FORMS OPERATION.

NOTE: SINGLE SPACE, SKIP TO 3 AND THE 9 AND 12 LATCHES ARE USED IN THIS TEST. RUN THE 9 AND 12 LATCH TEST, 2020C BEFORE THIS TEST.

B. LOADING PROCEDURES:

PLACE TEST IN 1402 READ HOPPER AND DEPRESS LOAD KEY. THE PROGRAM WILL COME TO A HALT, LOCATION 421, AFTER THE TITLE PRINT ROUTINE TO ALLOW OPERATOR TO INSTALL THE CARRIAGE TAPE. THE TEST NOW CAN BE STARTED BY PRESSING THE START KEY. WHEN RUNNING TEST FROM TAPE ENTER A 1 IN 1255.

C. PROGRAM CONTROL:

1. CHECKING PROCEDURE

WITH SENSE SWITCHES B AND E BOTH OFF, ERRORS WILL PRINT OUT. SWITCH D MAY BE USED TO LOOP PROGRAM.

WITH SENSE SWITCH B ON AND E OFF, ERRORS WILL NOT PRINT. THE PROGRAM WILL LOOP WITHOUT A HALT. THE CARRIAGE CAN BE DISENGAGED OR THE PAPER REMOVED.

WITH SENSE SWITCH B ON AND E ON, ERRORS WILL NOT PRINT. THE PROGRAM HALTS AT THE PARTICULAR ERROR STOP. THE CARRIAGE LOCATION MAY BE EXAMINED, AND THE PROGRAM WILL LOOP WHEN THE START KEY IS DEPRESSED.

2. SENSE SWITCHES

B ON LOOPS PROGRAM WHEN ERROR OCCURS WITHOUT PRINTING ERRORS
 B OFF ALLOWS ERRORS TO PRINT DEPENDENT ON SENSE SWITCH E.

C ON CAUSES CORRECT OPERATION TO PRINT OUT
 C OFF PREVENTS CORRECT OPERATION FROM PRINTING

D ON LOOPS PROGRAM
 D OFF ALLOWS PROGRAM TO END WHEN ERRORS DO NOT OCCUR

E ON CAUSES PROGRAM TO HALT ON ERROR
 E OFF ALLOWS ERRORS TO PRINT IF SENSE SWITCH B IS OFF

F USED WHEN TEST IS RUN FROM TAPE -- MAGNETIC

| | | | | | | | |
|--------------|---------|---------|----------|--|--|--|--|
| DATE | 5-15-62 | 4-25-63 | 25.6.63 | | | | |
| NO. CHG. NO. | 115203 | 116745A | TA-1844A | | | | |

DIAGNOSTIC FUNCTION TEST

PART NO 451926
 SHEET 2 OF 13
 BLOCK NO 2005A

REPRODUCTION

D. TEST PROCEDURE:

THE CARRIAGE SINGLE LINE SKIPS TO CHANNEL 4, AND INITIAL CHECK IS MADE OF THE 9 AND 12 LATCHES FOR AN OFF CONDITION. FROM THIS POINT ON ONLY THE 9 OR 12 LATCH, WHICHEVER IS APPROPRIATE WILL BE CHECKED.

AT THIS POINT, A PROGRAM LOOP IS FOLLOWED, STARTING WITH STEP 3 BELOW.

1. SINGLE LINE SKIP TO NEXT CHANNEL.
2. THE 12 LATCH IS CHECKED FOR AN OFF CONDITION. THE LATCH SHOULD HAVE BEEN TURNED OFF AS THE RESULTS OF THE SKIP.
3. THE CARRIAGE SINGLE SPACES TO THE 12 HOLE FOLLOWING THE CHANNEL HOLE AND THE 12 LATCH IS CHECKED FOR AN ON CONDITION.
4. DEPENDENT ON SENSE SWITCH C, THE CARRIAGE EITHER SINGLE SPACES OR PRINTS AND SINGLE SPACES.
5. THE CARRIAGE SPACES 5 TIMES TO MOVE INTO POSITION FOR THE NEXT SINGLE LINE SKIP AND THE 12 LATCH IS CHECKED FOR AN ON CONDITION BECAUSE THE 12 HOLE WAS THE LAST HOLE SENSED.

THE LOOP IS REPEATED FROM STEP 1 FOR SINGLE LINE SKIPS TO CHANNELS 5, 6, 7, 8, AND 9. NOW A NEW LOOP WHICH USES THE 9 INSTEAD OF THE 12 LATCH IS USED TO CHECK SINGLE LINE SKIPS TO CHANNELS 10, 11, 12, 1, 2 AND 3.

NORMALLY THE TEST WOULD END AFTER THE FIRST STEP OF THE NEXT PROGRAM LOOP. THE PRINT-OUT WOULD STATE --END OF TEST TYPE OF ERROR NONE --. HOWEVER IF SENSE SWITCH D IS ON, THE PROGRAM WILL CONTINUE TO LOOP AND IGNORE THE END OF TEST. SUCCESSFUL SKIPS ARE PRINTED OUT IF SENSE SWITCH C IS ON.

SHOULD AN ERROR OCCUR, THE TEST STOPS. THE MACHINE WILL EITHER PRINT OUT THE ERROR OR COME TO AN ERROR HALT. IF THE TEST IS LOOPED, IT STARTS FROM THE BEGINNING, CHANNEL 4. THE END OF TEST IS SIGNALLED BY A PROGRAM HALT.

E. STOPS:

STOR ADDR REGISTER

ERROR STOPS WILL ONLY OCCUR IF SENSE SWITCH E IS ON

- 161 INITIAL ERROR - THE 9 OR 12 LATCH WAS ON AT THE END OF THE INITIAL SKIP TO 4.
- 421 INSTALL CARRIAGE TAPE AND DEPRESS START.
- 768 ERROR #1 12 LATCH WAS ON AT END OF SINGLE LINE SKIP. THE CARRIAGE SHOULD HAVE STOPPED ONE SPACE AHEAD OF THE 12 CHANNEL. THE STOP BRUSH SHOULD BE IN THE 12 HOLE.
- 788 ERROR #2 12 LATCH DID NOT TURN ON. THE CARRIAGE SHOULD HAVE SPACED INTO THE 12 CHANNEL AND TURNED ON THE LATCH. THE STOP BRUSH SHOULD BE ONE SPACE PAST THE 12 HOLE.

| | | | | | | | |
|---------------|---------|---------|----------|--|--|--|--|
| DATE | 5-15-62 | 4-25-63 | 25.6.63 | | | | |
| ENG. CHG. NO. | 11323 | 116745A | TA 1844A | | | | |

E. (CONTINUED)

REPRODUCTION

STOR ADDR REGISTER

ERROR STOPS WILL ONLY OCCUR IF SENSE SWITCH E IS ON

- 808 ERROR #3 12 LATCH WAS OFF WHEN CARRIAGE MOVED INTO POSITION TO EXECUTE A SINGLE LINE SKIP. THE LATCH SHOULD NOT HAVE GONE OFF BECAUSE NO CHANNEL HAD BEEN ENCOUNTERED SINCE THE LAST 12 HOLE. STOP BRUSH SHOULD BE SITTING IN THE HOLE OF THE SINGLE LINE SKIP CHANNEL.
- 828 ERROR #4 9 LATCH WAS ON AT END OF SINGLE LINE SKIP. THE CARRIAGE SHOULD HAVE STOPPED ONE SPACE AHEAD OF THE 9 CHANNEL. THE STOP BRUSH SHOULD BE IN THE 9 HOLE.
- 848 ERROR #5 9 LATCH DID NOT TURN ON. THE CARRIAGE SHOULD HAVE SPACED INTO THE 9 CHANNEL AND TURNED ON THE LATCH. THE STOP BRUSH SHOULD BE ONE SPACE PAST THE 9 HOLE.
- 868 ERROR #6 9 LATCH WAS OFF WHEN CARRIAGE MOVED INTO POSITION TO EXECUTE A SINGLE LINE SKIP. THE LATCH SHOULD NOT HAVE GONE OFF BECAUSE NO CHANNEL HAD BEEN ENCOUNTERED SINCE THE LAST 9 HOLE. STOP BRUSH SHOULD BE SITTING IN THE HOLE OF THE SINGLE LINE SKIP CHANNEL.
- 936 PROGRAM WILL STOP HERE ON ANY ERROR IF NOT IN A LOOP.
- 940 END OF TEST - ERROR, DEPRESS START TO CONTINUE TO NEXT TEST.
- 968 END OF TEST - NO ERRORS, DEPRESS START TO CONTINUE TO NEXT TEST.

F. PRINTOUTS

CORRECT PRINTOUTS WITH SENSE SWITCH C ON

03 CHANNEL TESTED OK SINGLE LINE SKIP 09 LATCH TYPE OF ERROR
 END TEST TYPE OF ERROR NONE
 ETC. FOR ALL CHANNELS.

ERROR PRINTOUTS WITH SENSE SWITCH E OFF

INITIAL ERROR LATCHES FAILED OR CARRIAGE DID NOT GO TO FOUR.

04 CHANNEL TESTED SINGLE LINE SKIP 12 LATCH TYPE OF ERROR 2
 10 CHANNEL TESTED SINGLE LINE SKIP 09 LATCH TYPE OF ERROR 6
 ETC. FOR ALL CHANNELS AND ERROR CONDITIONS.

| | | | | | | | |
|-------------|---------|---------|----------|--|--|--|--|
| DATE | 5-15-63 | 4-25-63 | 25.6.63 | | | | |
| S. CHG. NO. | 115283 | 116745A | TA-1844A | | | | |

DIAGNOSTIC FUNCTION TEST

PART NO. 451926
SHEET 4 OF 13
BLOCK NO. 2005A

REPRODUCTION

G. COMMENTS

ESSENTIALLY THE CARRIAGE TAPE IS PUNCHED EVERY 8 SPACES. EACH CHANNEL PUNCH IS FOLLOWED WITH A 9 OR 12 PUNCH FOR CHECKING CORRECT OPERATION.

THIS IS THE SAME CARRIAGE TEST TAPE AS USED WITH TEST 2000C, 2010B, AND 2020C.

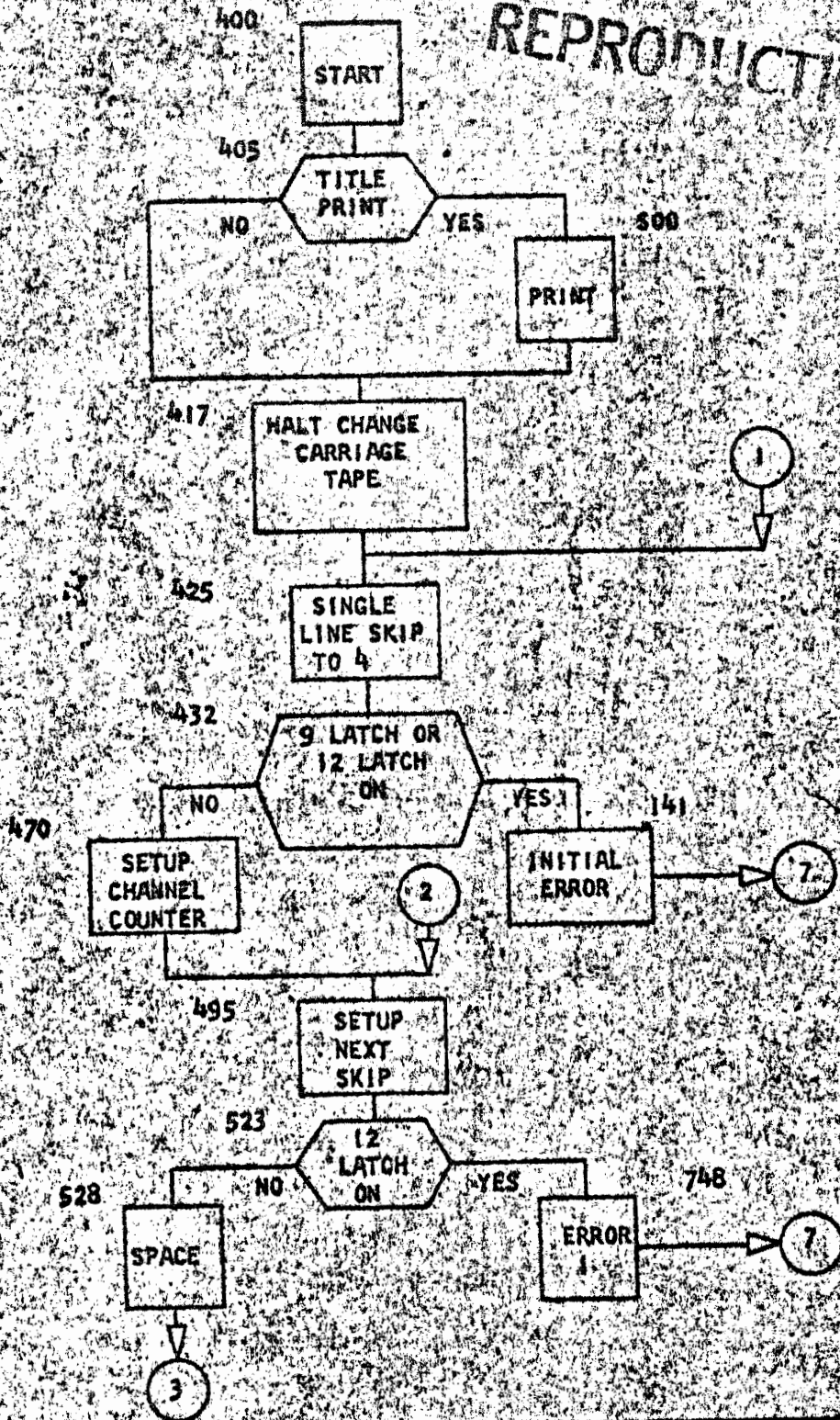
THE CARRIAGE TEST TAPE IS PUNCHED AS FOLLOWS:

| LINE | HOLE | LINE | HOLE | LINE | HOLE |
|------|------|------|------|------|------|
| 1 | 1 | 33 | 5 | 65 | 9 |
| 2 | 9 | 34 | 12 | 66 | 12 |
| 9 | 2 | 41 | 6 | 73 | 10 |
| 10 | 9 | 42 | 12 | 74 | 9 |
| 17 | 3 | 49 | 7 | 81 | 11 |
| 18 | 9 | 50 | 12 | 82 | 9 |
| 25 | 4 | 57 | 8 | 89 | 12 |
| 26 | 12 | 58 | 12 | 90 | 9 |

SRLICE TAPE SO THE 0 AND 96 COINCIDE.

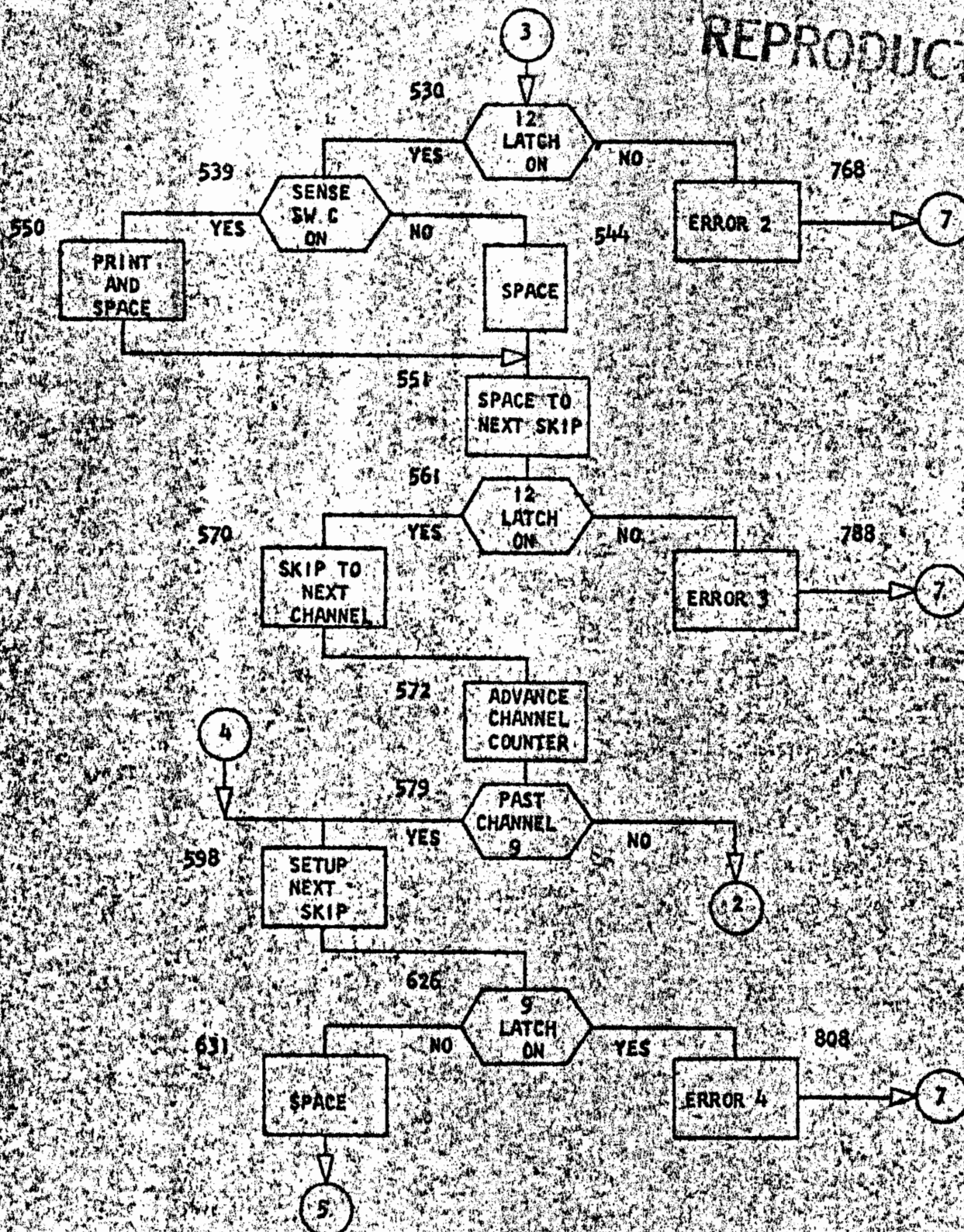
| | | | | | | | |
|---------------|---------|---------|----------|--|--|--|--|
| DATE | 5-15-62 | 4-25-63 | 25.6.63 | | | | |
| ENO. CHG. NO. | 116235 | 116745A | TA 1844A | | | | |

REPRODUCTION



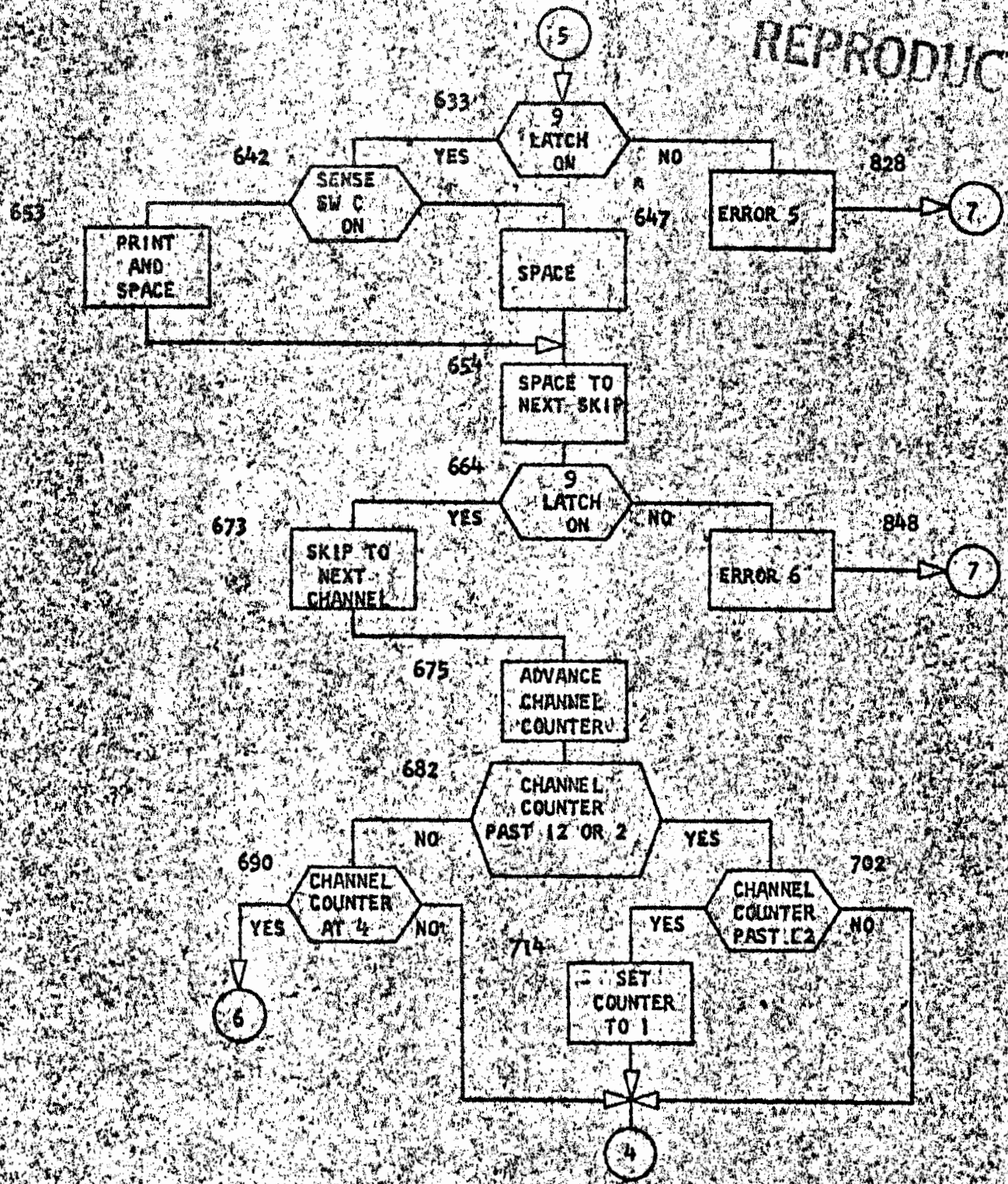
| | | | | | | | |
|---------------|---------|---------|----------|--|--|--|--|
| DATE | 5-15-62 | 4-25-63 | 25.6.63 | | | | |
| ENG. CHG. NO. | 115283 | 716745A | TA 1844A | | | | |

REPRODUCTION



| | | | | | | | | |
|---------------|---------|---------|----------|--|--|--|--|--|
| DATE | 5-15-62 | 4-25-63 | 25.6.63 | | | | | |
| ENG. CHG. NO. | 115283 | 116745A | TA 1244A | | | | | |

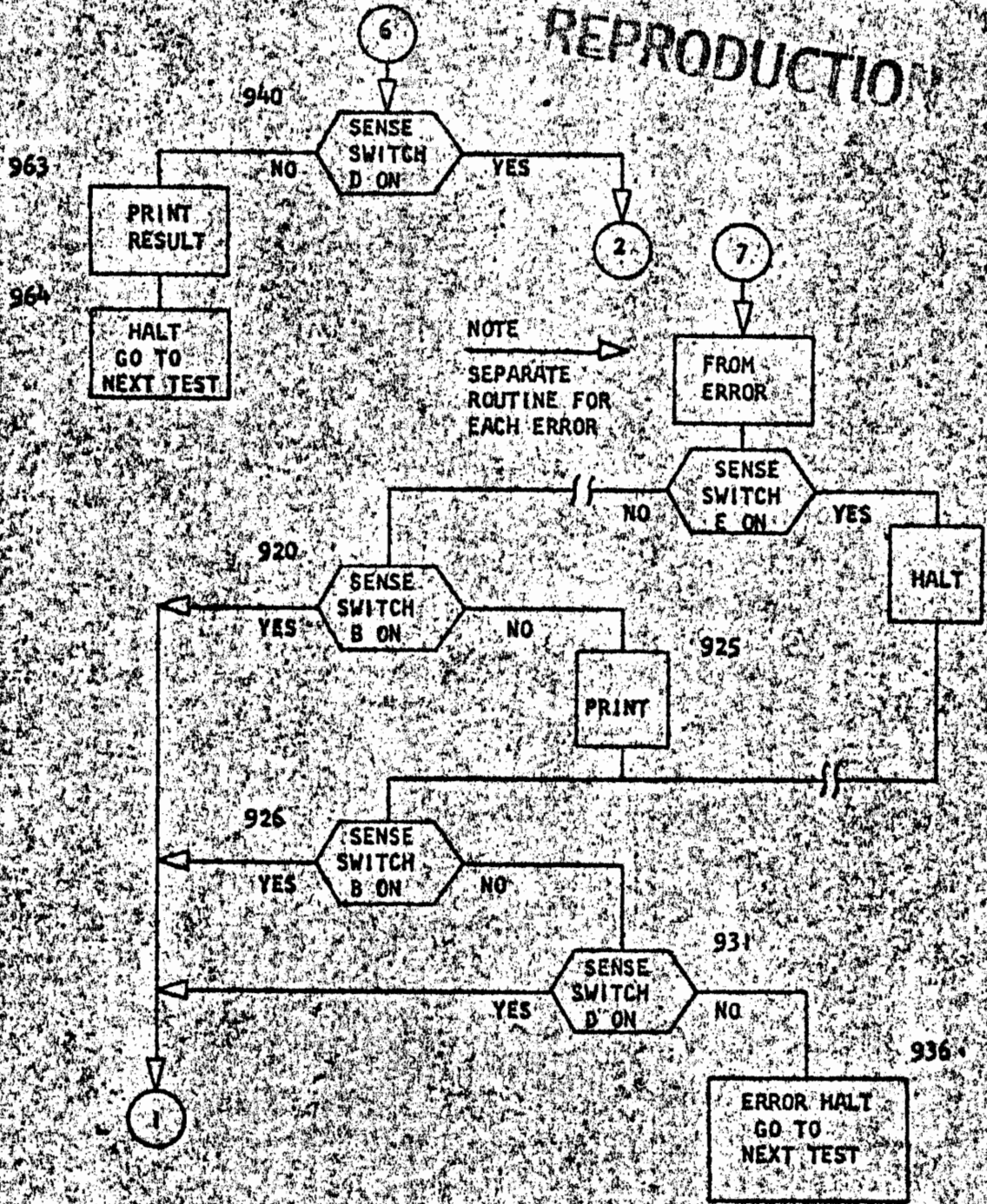
REPRODUCTION



| | | | | | | | |
|---------------|---------|---------|----------|--|--|--|--|
| DATE | 5-15-62 | 4-25-63 | 25.6.63 | | | | |
| ENG. CNO. NO. | 115283 | 116745A | TA-1844A | | | | |

DIAGNOSTIC FUNCTION TEST

REPRODUCTION



| | | | | | | | | |
|---------------|---------|---------|----------|--|--|--|--|--|
| DATE | 5-15-62 | 4-25-63 | 25.6.63 | | | | | |
| ENG. CHG. NO. | 115283 | 116745A | TA 1844A | | | | | |

REPRODUCTION

PROGRAM LISTING FOR USE WITH FLOW CHART

SINGLE LINE SKIP TEST 2005A

| INSTRUCTION | ADDRESS | OP | A | B | REMARKS |
|-------------|---------|----|-----|------|---|
| 002 | 082 | I | NIF | IAL | INITIAL ERROR LATCHES FAILED OR CARRIAGE DID NOT GO TO FOUR |
| 101 | 181 | M | 140 | 290 | INITIAL ERROR |
| 140 | 180 | B | 157 | E | GO TO INITIAL ERROR HALT |
| 158 | 158 | B | 920 | | GO TO SW B |
| 157 | 157 | A | 926 | | GO TO SW B |
| 157 | 141 | | | | WORD MARK |
| 377 | 377 | B | 389 | 5561 | USE WHEN TESTS ARE RUN FROM TAPE |
| 388 | 388 | B | 588 | | USE WHEN TESTS ARE RUN FROM TAPE |
| 389 | 389 | M | 000 | | USE WHEN TESTS ARE RUN FROM TAPE |
| 393 | 393 | M | 360 | 302 | USE WHEN TESTS ARE RUN FROM TAPE |
| 400 | 400 | / | 332 | | START TEST |
| 408 | 408 | / | | | CLEAR PRINT AREA |
| 405 | 405 | B | 500 | 5521 | TITLE PRINT |
| 418 | 413 | / | 080 | | |
| 417 | 417 | / | 421 | | HALT TO CHANGE CARRIAGE TAPE |
| 421 | 421 | B | 968 | | GO TO INITIAL SETUP |
| 425 | 425 | F | 4 | | START AT CHANNEL 4 |
| 427 | 427 | / | 332 | | CLEAR PRINT AREA |
| 437 | 481 | / | | | |
| 482 | 482 | B | 141 | 0 | INITIAL ERROR |
| 437 | 487 | B | 141 | 2 | INITIAL ERROR |
| 442 | 482 | M | 430 | 259 | 12 LATCH TO PRINT AREA |
| 440 | 489 | L | 440 | 220 | 04 CHANNEL TO PRINT AREA |
| 456 | 466 | M | 471 | 293 | TYPE OF ERROR TO PRINT AREA |
| 463 | 463 | M | 487 | 250 | SINGLE LINE SKIP TO PRINT AREA |
| 470 | 470 | L | 739 | 735 | SET UP CHANNEL COUNTER |
| 477 | 477 | B | 481 | | GO TO 12 LATCH TEST |
| 481 | 481 | M | 450 | 230 | CHANNEL TESTED OK-TO PRINT AREA |
| 488 | 488 | M | 734 | 212 | XX TO IDENTIFY CHANNEL |
| 495 | 405 | M | 734 | 512 | BUILD ADDRESS FROM CHANNEL COUNTER |
| 502 | 502 | M | 908 | 510 | 9XX IS TABLE ADDRESS |
| 509 | 509 | M | 9XX | 571 | SETUP NEXT SKIP INSTRUCTION FROM TABLE |
| 516 | 516 | M | 424 | 253 | 12 TO IDENTIFY LATCH |
| 529 | 528 | B | 748 | a | ERROR #1 |
| 528 | 528 | F | J | | SPACE TO 12 LATCH |
| 530 | 530 | B | 539 | a | NO ERROR |
| 535 | 535 | B | 768 | | ERROR #2 |
| 539 | 539 | B | 550 | C | GO TO PRINT |
| 544 | 544 | F | J | | SPACE OUT OF 12 |
| 546 | 546 | B | 651 | | NO PRINT |
| 550 | 550 | Z | | | PRINT AND SPACE OUT OF 12 |
| 551 | 661 | F | J | | SPACE |

| | | | | | | | |
|---------------|---------|---------|----------|--|--|--|--|
| DATE | 5-15-62 | 4-25-63 | 25.6.63 | | | | |
| ENG. CHG. NO. | 115283 | 116745A | TA-1844A | | | | |

1401 DATA PROCESSING SYSTEM
DIAGNOSTIC FUNCTION TEST

REPRODUCTION

| | | | | | |
|-----|-----|---|-----|------|--|
| 558 | 553 | F | J | | SPACE |
| 565 | 565 | F | J | | SPACE |
| 552 | 557 | F | J | | SPACE |
| 559 | 559 | F | J | | SPACE |
| 561 | 561 | B | 570 | a | NO ERROR |
| 566 | 566 | B | 788 | | ERROR #3 |
| 570 | 570 | F | X | | *SINGLE LINE SKIP TO NEXT CHANNEL |
| 572 | 572 | A | 743 | 735 | ADD TO CHANNEL COUNTER |
| 579 | 579 | B | 591 | 7340 | CONTROL-GO TO 9 LATCH TEST |
| 582 | 587 | B | 481 | | GO BACK TO 12 TEST |
| 591 | 591 | M | 734 | 212 | XX TO IDENTIFY CHANNEL |
| 598 | 598 | M | 734 | 616 | BUILD ADDRESS FROM CHANNEL COUNTER |
| 605 | 605 | M | 908 | 613 | 9XX IS TABLE ADDRESS |
| 612 | 612 | M | 9XX | 674 | *SET UP NEXT SKIP INSTRUCTION FROM TABLE |
| 619 | 619 | M | +22 | 253 | 9 TO IDENTIFY LATCH |
| 626 | 626 | B | 808 | 9 | ERROR #4 |
| 631 | 631 | F | J | | SPACE TO 9 LATCH |
| 638 | 633 | B | 642 | 9 | NO ERROR |
| 638 | 638 | B | 828 | | ERROR #5 |
| 642 | 642 | B | 653 | C | GO TO PRINT |
| 647 | 647 | F | J | | SPACE OUT OF 9 |
| 649 | 649 | B | 654 | | NO PRINT |
| 653 | 653 | | 2 | | PRINT AND SPACE OUT OF 9 |
| 654 | 654 | F | J | | SPACE |
| 658 | 658 | F | J | | SPACE |
| 658 | 658 | F | J | | SPACE |
| 660 | 660 | F | J | | SPACE |
| 662 | 662 | F | J | | SPACE |
| 664 | 665 | B | 673 | 9 | NO ERROR |
| 669 | 669 | B | 848 | | ERROR #6 |
| 673 | 673 | F | X | | *SINGLE LINE SKIP TO NEXT CHANNEL |
| 675 | 675 | A | 743 | 735 | ADD TO CHANNEL COUNTER |
| 682 | 682 | B | 702 | 7343 | CONTROL-PAST 2 OR 12 - TEST |
| 690 | 690 | B | 940 | 7344 | AT 4 GO TO END ROUTINE |
| 698 | 698 | B | 591 | | GO BACK TO 9 LATCH TEST |
| 702 | 702 | B | 714 | 7331 | PAST 12 - RESET CHANNEL CTR TO ONE |
| 710 | 710 | B | 591 | | GO BACK TO 9 LATCH TEST |
| 715 | 715 | A | 747 | 735 | ADD 88 TO CHANNEL COUNTER |
| 721 | 721 | M | 909 | 732 | SUPPRESS CARRY |
| 728 | 728 | B | 591 | | GO BACK TO 9 LATCH TEST |
| 734 | 734 | O | 040 | | CHANNEL COUNTER RESET VALUE |
| 740 | 740 | O | 010 | | CHANNEL COUNTER INCREMENT |
| 744 | 744 | O | 800 | | CHANNEL COUNTER RESET TO ONE |
| 748 | 748 | M | 912 | 294 | ERROR #1 |
| 755 | 755 | B | 764 | B | GO TO HALT FOR ERROR #1 |
| 760 | 760 | B | 913 | | GO TO SW B |
| 764 | 764 | | 926 | | GO TO SW B |
| 768 | 768 | M | 901 | 294 | ERROR #2 |
| 775 | 775 | B | 784 | E | GO TO HALT FOR ERROR #3 |
| 780 | 780 | B | 913 | | GO TO SW B |
| 784 | 784 | | 926 | | GO TO SW B |

| | | | | | | | |
|---------------|---------|---------|----------|--|--|--|--|
| DATE | 5-15-63 | 4-25-63 | 25.6.63 | | | | |
| ENG. CHG. NO. | 115283 | 116745A | TA-1844A | | | | |

REPRODUCTION

788 788 M 903 296
796 795 B 806 E
800 800 B 913
804 804 B 926
808 808 M 903 296
816 815 B 824 E
820 820 B 913
824 824 B 926
828 828 M 904 296
836 835 B 844 E
840 840 B 913
844 844 B 926
848 848 M 905 296
856 855 B 864 E
860 860 B 913
864 864 B 926
868 868
901 901 2
902 902 3
903 903 6
904 904 6
906 905 4
908 908 7
909 909 8
908 908 9
909 909 0
910 910 4
911 911 2
912 912 1
913 913 M 989 230
920 920 B 421 B
925 925 2
926 926 B 421 B
931 931 B 421 D
936 936 B 348
940 940 B 481 D
946 945 J 280
950 949 M 491 299
954 954 M 458 270
965 963 2
964 964 B 348
968 968 F 3
970 970 F J
972 972 F J
974 974 F J
976 976 F J
978 978 F J
980 980 F J
982 982 F J
984 984 B 425
988 988

ERROR #3
GO TO HALT FOR ERROR #3
GO TO SW B
GO TO SW B
ERROR #4
GO TO HALT FOR ERROR #4
GO TO SW B
GO TO SW B
ERROR #5
GO TO HALT FOR ERROR #5
GO TO SW B
GO TO SW B
ERROR #6
GO TO HALT FOR ERROR #6
GO TO SW B
GO TO SW B
WORD MARK
THIS IS A TABLE TO BE
USED TO DETERMINE THE
NEXT SINGLE LINE SKIP
THE TABLE IS CONSTRUCTED
FROM THE VALUE IN THE
CHANNEL COUNTER TO WHICH
IS ADDED THE PREFIX ?
TABLE
TABLE
TABLE
TABLE
MODIFY REMARKS FOR ERROR
LOOP ON ERROR DO NOT PRINT
PRINT ERROR
RESTART ON ERROR DO NOT PRINT
RESTART WITH OR WITHOUT PRINTING
ERROR FINAL HALT
LOOP WITH OR WITHOUT PRINTING
CLEAR PRINT AREA
PLACE NO ERROR IN PRINT AREA
END OF TEST TO PRINT AREA
PRINT
CORRECT OPERATION FINAL HALT
MAKE INITIAL SETUP

*AN ASTERISK MEANS INSTRUCTIONS CHANGE

| | | | | | | | |
|---------------|---------|---------|----------|--|--|--|--|
| DATE | 5-15-62 | 4-25-63 | 25.6.63 | | | | |
| ENG. CHG. NO. | 115283 | 116745A | TA-1844A | | | | |

DIAGNOSTIC FUNCTION TEST

REPRODUCTION

1021 021 0 9
 1023 023 1 2 L ATCH
 1031 031 0 4 C HANDED TESTED OK
 1051 051 E ND TEST
 1059 059 T YPE OF ERROR
 1072 072 S ING LE LINE SKIP
 1088 088 N ONE

| | | | | | | | | |
|---------------|---------|---------|----------|--|--|--|--|--|
| DATE | 5-15-62 | 4-25-63 | 25.6.63 | | | | | |
| ENG. CHG. NO. | 115283 | 116745A | TA-1844A | | | | | |

TABLE OF UNPRINTABLE CHARACTERS

PRODUCTION

| | | | | | |
|----------------------|--------|-----------------|--------|--------------|--------|
| LP-LEFT PARENTHESIS | 12 5 8 | SE-SEMICOLON | 11 6 8 | DE-DELTA | 12 7 8 |
| WS-WORD SEPARATOR | 0 5 8 | LT-LESS THAN | 12 6 8 | PZ-PLUS ZERO | 12 0 |
| TS-TAPE SEGMENT MARK | 0 7 8 | GT-GREATER THAN | 6 8 | TM-TAPE MARK | 7 8 |
| GM-GROUP MARK | 12 7 8 | MZ-MINUS ZERO | 11 0 | CO-COLON | 5 8 |
| RP-RIGHT PARENTHESIS | 11 5 8 | AP-APOSTROPHE | 0 6 8 | | |

| | | | |
|---|--|--|-------------|
| .088015;022029,033033N | 1001 | SINGLE LINE SKIP TEST | 2005A00A |
| .088015;022029,033033N | 1001 | SET WORDMARK CARD | 2005A 02 |
| L032119;082082,082082,0820821001 | | INITIAL ERROR LATCHES FAILED OR CARRIA | 2005A 03 |
| L069156;120120,141148,1531571001GE | | DID NOT GO TO FOURNIA0299B157EB920 | 2005A 04 |
| L072196;161161,161161,1611611001 | .926 | | 2005A 05 |
| L067367;340344,348349,3573611001 | .006012,001100118361080AB421/340080 | | 2005A 06 |
| L069404;377385,389393,4004041001 | | B38955518588N000M360392/3327 | 2005A 07 |
| L059431;413473,421425,4274311001 | 85009521/080.4218968F4/3327 | | 2005A 08 |
| L070469;457442,449456,4634701001 | 8141981412M#30259L440220M#71293M#87250 | | 2005A 09 |
| L071500;477481,488495,5025091001 | L7397358481M#50230M734212M734512M908510 | | 2005A 10 |
| L067543;516623,528530,5355391001 | M9XX571M#2425387482FJ8539887688550C | | 2005A 11 |
| L047558;546550,551553,5555571001 | FJ85512FJFJFJFJ | | 2005A 12 |
| L064590;561566,570572,5795871001 | FJ857028788FXA743735859173408481 | | 2005A 13 |
| L072630;598605,612619,6266311001 | M734212M734615M908613M9XX674M#2225388080 | | 2005A 14 |
| L056653;633638,642647,6496531001 | FJ8642988288653CFJ86542 | | 2005A 15 |
| L051672;656658,660662,6646691001 | FJFJFJFJFJFJFJ867398848 | | 2005A 16 |
| L069709;675682,690698,7027101001 | FXA7437358702734389407344859187147331 | | 2005A 17 |
| L070747;714721,728736,7407441001 | 8591A747735M9097328591 004000100880 | | 2005A 18 |
| L068783;755760,764768,7757801001 | M9122968764EB913.926M9012968784EB913 | | 2005A 19 |
| L068819;788795,800804,8088151001 | .926M9022968804EB913.926M9032968824E | | 2005A 20 |
| L067854;824828,835840,8448481001 | 8913.926M9042968844EB913.926M905296 | | 2005A 21 |
| L072894;860864,868868,8688681001 | 8864EB913.926 | | 2005A 22 |
| L042904;895895,901902,9039041001 | | 2345 | 2005A 23 |
| L039911;908907,908909,9109111001 | 1678908 | | 2005A 24 |
| L060939;913920,925926,9319361001 | M9892308421828421884210.348 | | 2005A 25 |
| L062969;945949,956963,9649681001 | 84810/280M#91299M#582702.348F3 | | 2005A 26 |
| L046983;972974,976978,9809821001 | FJFJFJFJFJFJFJFJ | | 2005A 27 |
| L073422;98821,23+28,23+231001 | 8425 | | 09 2005A 28 |
| L068458;431+51,459+59,459+591001 | 12 LATCH04 CHANNEL TESTED OKEND TEST | | 2005A 29 |
| L072998;472+88,488+88,488+881001 | TYPE OF ERRORSINGLE LINE SKIPNONE | | 2005A 30 |
| L057524;501505,512513,5175181001 | 2.049L0772772/2772N000000 | | 2005A 31 |
| L052544;629536,637541,6455451001 | N000N000000N0002413 | | 2005A 32 |
| #338080N | | CLEAR WORDMARK CARD | 2005A 33 |
| .019027;031,038042B031Y98G8400L04635284048588 | | SINGLE LINE SKIP TEST | 2005A 34 |

| | | | | | | | |
|--------------|---------|---------|---------|--|--|--|--|
| DATE | 5-15-62 | 4-25-63 | 25.6.63 | | | | |
| NO. CHG. NO. | 115283 | 116745A | JA1844A | | | | |